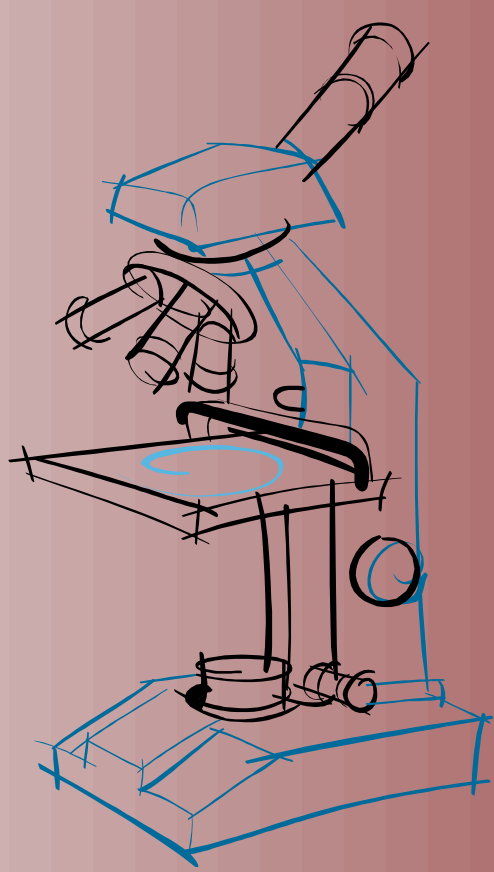


THE CZECH NATIONAL PROGRAMME ON CONSERVATION AND UTILIZATION OF GENETIC RESOURCES OF MICROORGANISMS IMPORTANT FOR AGRICULTURE



Petr Kominek

Crop Research Institute, Drnovská 507, 161 06 Prague 6 - Ruzyně, CZECH REPUBLIC
kominek@vurv.cz



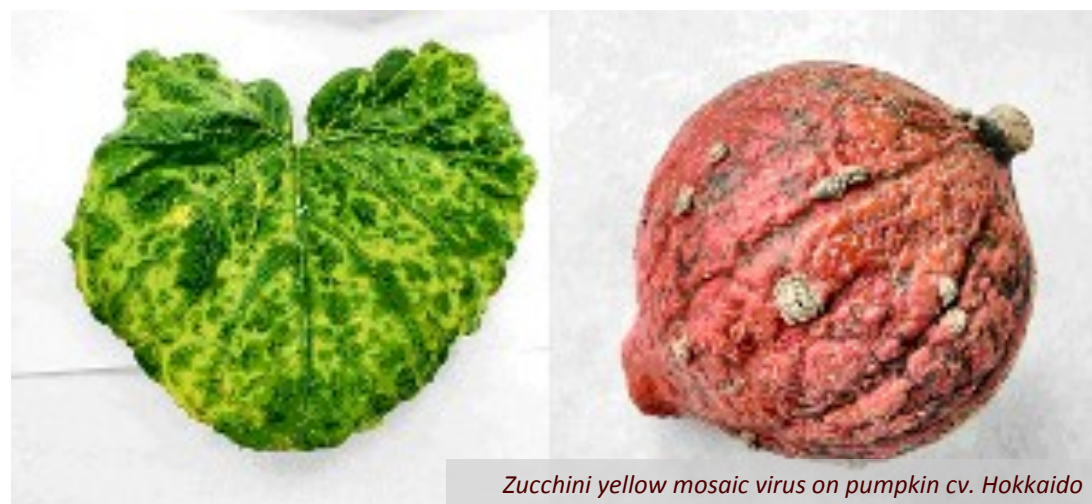
The Czech National Programme on Genetic Resources of Microorganisms Important for Agriculture is directed by Czech Ministry of Agriculture.
The aim:

- conservation of genetic resources of microorganisms *ex situ* in collections, safe maintaining of the genetic resources and their biodiversity
- record keeping and documentation of genetic resources, their evaluation on molecular level and possibility of utilization for agriculture
- enhancing the international cooperation, exchange of genetic resources



THE NATIONAL PROGRAMME CONSISTS FROM 20 COLLECTIONS OF GENETIC RESOURCES HELD IN 12 DIFFERENT BODIES:

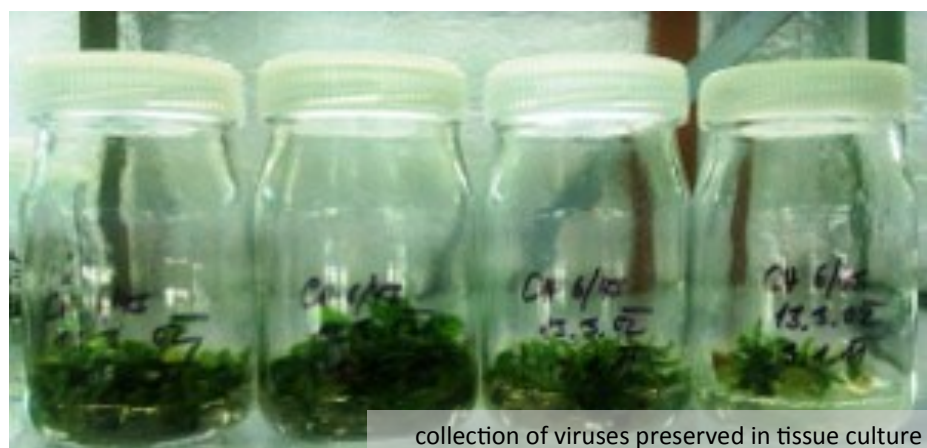
Collection of Plant Pathogenic Viruses (Crop Research Institute Prague - CRI)



Collection of Potato-Pathogenic Viruses (Potato Research Institute Havlíčkův Brod)

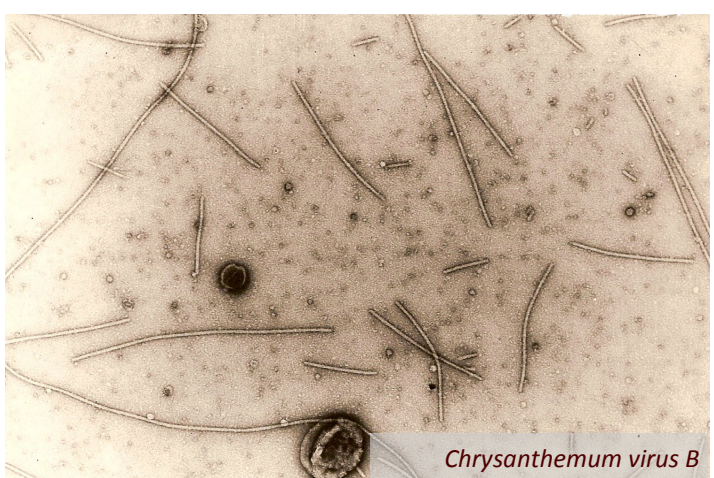


Collection of Fruit Trees and Small Fruit Viruses (Research and Breeding Institute of Pomology Holovousy)



Collection of Ornamental Plant Viruses

(Research Institute for Landscape and Ornamental Gardening Pruhonice - RILOG)



Collection of Animal Pathogenic Microorganisms (Veterinary Research Institute Brno)



Collection of Phytopathogenic Bacteria (CRI)



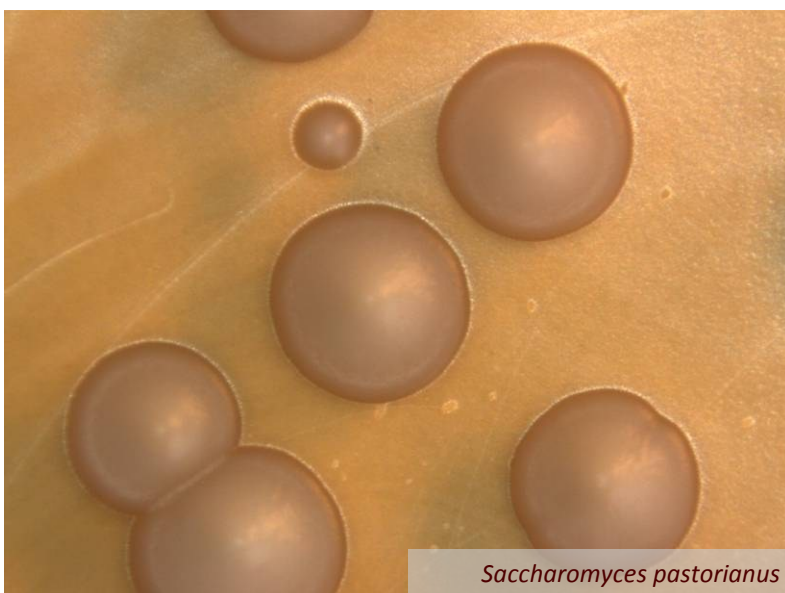
Culture Collection of Rhizobia (CRI)



Collection of Industrially Utilizable Microorganisms (Food Research Institute Prague)



Collection of Brewery Microorganisms (Research Institute of Brewing and Malting Prague)



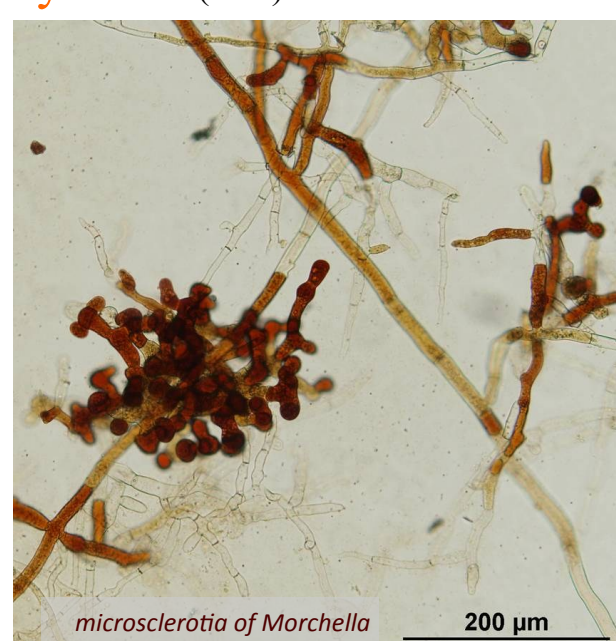
Culture Collection of Dairy Microorganisms (MILCOM a.s. Tabor)



Collection of Phytopathogenic Microorganisms (Palacky University Olomouc)



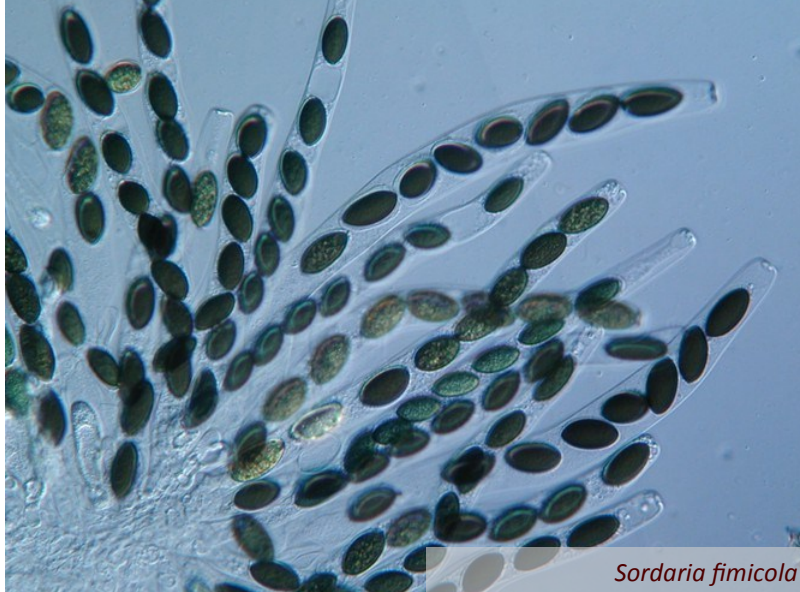
Collection of Fungi Important for Horticulture – Macromycetes (CRI)



Collection of Rusts and Powdery Mildew (CRI)



Collection of Phytopathogenic Fungi (CRI)

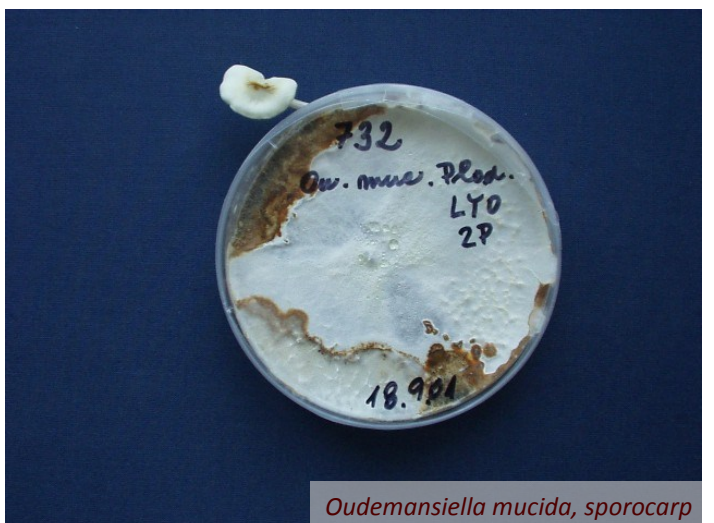


Collection of Hop Pathogens (Hop Research Institute Zatec)



Culture Collection of Basidiomycetes Important for Agriculture

(Institute of Microbiology, Academy of Sciences, Prague)



Culture Collection of Fungi Important for Agriculture and Food Industry (Charles University Prague)



Collection of Phytopathogenic Oomycetes (RILOG)



Collection of Invertebrate Crop Pests and their Natural Enemies (CRI)



Collection of Stored-Product Pests, Mites and Fungi (CRI)

